

NOVEMBER 2017 BOM

CUP OF TEA, ANYONE?

BY GINNY DORRIS AND ROBYN BELLAMY

This month we'll make colorful tea cup blocks and the winner will end up with enough for a party...or a quilt. The block should measure 8½" square, or 8" in the finished quilt. We'll make the curved handle, by topstitching a tube that we make from a bias strip to the background fabric. It's a great technique to learn if you haven't tried it yet!

THE PATTERN IS ONLY A SUGGESTION. Feel free to make it your own by changing the size or shape of the cup and/or handle. Also feel free to use appliqué, but please, no raw edges. If you make changes, please remember that every cup MUST have a saucer, a handle, and a black background.

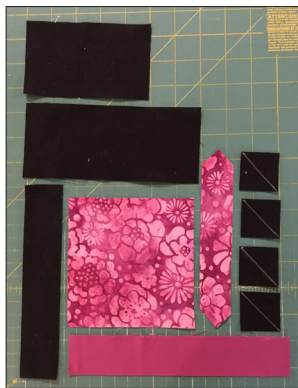
FABRIC:

Colorful Prints or Solids:

Choose up to 3 bright, coordinated fabrics for the cup, handle and saucer.

Black:

You may use solid black or black with a small print, as long as it reads as black.



CUTTING:

Cup: (1) 5" x 5" square.

Handle:

(1) 1¼" x 7" rectangle, CUT ON THE BIAS, so it's stretchy.

Saucer:

(1) 1½" x 8½" rectangle.

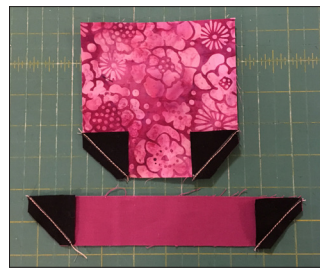
Black:

- (4) 1½" x 1½" squares
- (1) 1½" x 7½" rectangles
- (1) 3" x 7½" rectangle
- (1) 5" x 3" rectangle

DIRECTIONS:

1.) Draw a diagonal line across the back of the (4) black 1½" squares. Place those squares, right sides together, at the lower bottom corners of the cup and the saucer rectangles.

Sew ON the diagonal lines. Cut the corner off each black square ¼" away from the sewing line. Press the seams in toward the cup and saucer.



2. Sew the 5" x 3" black rectangle to the top of the cup. Press seam toward cup.

3. Fold the bias strip you cut for the handle in half, along its length, WRONG sides together. Do not press it. Sew a scant ¼" seam along the edge.



4. Place the tube you've created on your ironing board with the seam facing up, and roughly centered. Press. (You can press the seam open or to either side....it will be hidden.)



5. Place the 3" x 7" black rectangle next to the cup unit. Place the bias strip, seam side down, on top of the rectangle letting its ends to extend past the edge of the black fabric. Feel free to play with it: make the handle long or short. Line it up in a way that looks good to you and pin only the top and the bottom of the handle at the edge of the black fabric.

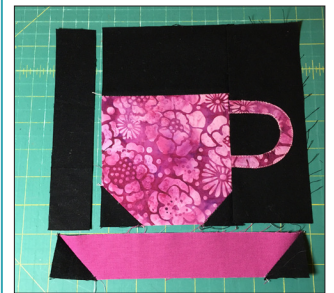


6. Using your fingers and as many pins as you need, flatten and curve the bias tube to approximate the shape of a handle. Press. Topstitch the handle to the background by sewing just inside each edge



along both sides using a coordinating color thread.

7. Trim away any extra handle fabric and sew the handle unit to the cup unit.



8. Sew the 1½" x 7½" black rectangle to the other side of the cup and the saucer to the bottom.

