

The Brooklyn Bee

BROOKLYN QUILTERS GUILD MONTHLY NEWSLETTER

September 2018

Volume 26
Issue 1

SEPTEMBER GUEST SPEAKER

PAT YAMIN
page 12

CHALLENGE QUILTS

Your Favorite Color
page 7

SEPTEMBER BLOCK OF THE MONTH

Twisted Square
page 9

SEPTEMBER VENDOR

SEW BEARY
SPECIAL

Dear Fellow Quilters and Friends,

Welcome Back! I hope you all had a wonderful and restful summer. We start our monthly gatherings with new ideas, new committee chairs, sharing and lots of charity work. To the members who stepped down: we are forever grateful for all the work you've done to keep the Guild in order.

As we begin our year between shows we must continue to prepare for our 2020 quilt show, new raffle quilt, show book to pass on and new ideas. Luckily we are financially ready for the next show. We all worked really hard for this so, thank you!

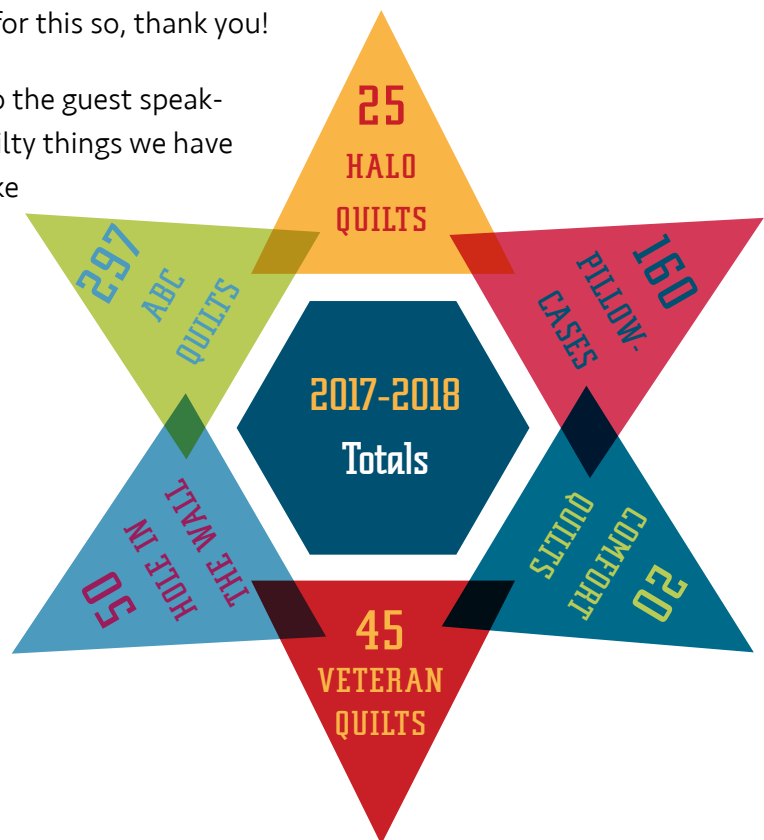
I am sure we are all looking forward to the guest speakers, mini-workshops and other fun quilty things we have scheduled for the year. If you would like to give a mini-workshop please let us know.

Once again, welcome back and I hope we have a wonderful year in quilts.

Sincerely,

Sylvia Hernandez
Co-President

PS: Welcome to new members!



2017-2018 Brooklyn Quilters Guild

OFFICERS

Co-Presidents

Sylvia Hernandez

347-723-3916

sylvia@brooklynquiltgirl.com

Jody Leight

973-673-7354

j_cyberbunny@yahoo.com

Vice President

Linda McNeely

718-440-4343

lmcneely07@gmail.com

Secretary

Trudy Reeves

718-415-2955

trudyreeves@yahoo.com

Treasurer

Ruth Marchese

718-625-7233

BQG.treasurer@gmail.com

ruth.marchese@yahoo.com

Membership

Mary Hawley

718-398-3234

mhawley.brooklyn@gmail.com

COMMITTEE CHAIRS

Easy as ABC/Kid's Quilts

Jennifer Arzberger

917-685-6712

jennarzberger@optimum.net

Teddy Acosta

toa1631@gmail.com

Georgiana Lombardi

gprenes@gmail.com

Block of the Month

Virginia Dorris

ginnydorris@gmail.com

Robyn Bellamy

646-423-9916

robynbellamy@gmail.com

Comfort Quilts

Dori Dietz

718-853-2153

doridietz1@gmail.com

For Your Information

Debbie Breckenridge

917-439-8272

debbie_breckenridge@yahoo.com

Challenge Quilt Co-Chairs

Kathy O'Leary

718-836-2248

fourboysko@gmail.com

Chris Petersen

718-680-7809

quiltfun@hotmail.com

Hospitality

Carolyn Alexander

347-267-4261

cacalexander3@gmail.com

Carol Sullivan

917-495-6315

sulliquilts@aol.com

Alzada Boudreau

718-614-3537

Georgiana Price

917-635-3602

gprice.inc@gmail.com

Marilynn Gipson

718-443-0922

gipsonm2000@yahoo.com

Lenni Abel Quilt Fund

Madi Appell

718-434-0647

NYCfash@aol.com

Newsletter Editors

Susan Aronoff

susan.aronoff@gmail.com

Debbie Breckenridge

917-439-8727

debbie.breckenridge@yahoo.com

Martha McDonald

917-846-9284

texasacd@hotmail.com

Nominating Committee

Carol Lieberman

718-769-5233

clieber@verizon.net

Meeting Raffle

Sandra Steinberg

917-885-8261

citydancer2@aol.com

Show and Tell Photography

Margaret Marcy Emerson

917-374-7718

margaret.marcy@gmail.com

Retreats — Heritage

Carol Lieberman

718-769-5233

clieber@verizon.net

Retreats — Koinonia

Sharon Pratt

917-273-8835

RMcd House Pillowcases

Robin Engelman

917-689-0402

raengelman@gmail.com

Show & Tell

Pat Decker

212-300-6285

patdecker@earthlink.net

Soldier Quilts

Sarah Vinson

718-934-7267

srhgvn@aol.com

Sunday Bee

Madonna Connor

718-748-6512

madonna49@verizon.net

Vendors

Madonna Connor

718-748-6512

madonna49@verizon.net

Carol Lieberman

718-769-5233

clieber@verizon.net

Website

Mary Hawley

718-398-3234

mhawley.brooklyn@gmail.com

Margaret Marcy

917-374-7718

margaret.marcy@gmail.com



The Brooklyn Bee

EDITORS

Susan Aronoff

Debbie Breckenridge

Martha McDonald

BEAT REPORTERS:

AREA QUILT SHOWS

Martha Musgrove

SEW KNOW

Marcie Brenner

TIPS N' TOOLS

Alice Braziller

BLOCK OF THE MONTH

Robyn Bellamy & Ginny Dorris

Something to share?

Deadline for submissions for

the October 2018 issue of

The Brooklyn Bee is 9 a.m.,

Monday, September 17, 2018.

Please email them to:

texasacd@hotmail.com

Join Us at Our Monthly Meetings

GUILD MEETINGS

Generally third Saturday of the month, except July and August.

NEXT MEETING: SEPTEMBER 15, 2018

Holy Name of Jesus Church, Shepherd's Hall

245 Prospect Park West (entrance to Shepherd's Hall in back, off the parking lot).

Business Meeting: 9:45 a.m. Members welcome.

General Meeting: 11:00 a.m. Members: free, guest fee: \$5.

Transportation:

Bus: B-68 to last stop at Prospect Park West.

From Park Slope: B67 and B69, to Prospect Park West & 20th St.

From Red Hook: B61 via 9th St. to Prospect Park West.

Subway: F train to 15th Street/Prospect Park.

Parking available.

SUNDAY BEES

Second and fourth Sundays of the month, 10 a.m.–4 p.m. Bring your sewing machine and lunch and spend the day.

Featuring Scrap Workshops led by Donna Rae.

Marion Heim Senior Center

4520 Fourth Avenue at 46th Street, Sunset Park, Brooklyn.

For more info, call Madonna Connor at 718-748-6512.

ABC and Soldier Quilts

THE EASY AS ABC QUILT PROGRAM DID very well last year. From last September to June 2018, we made a total of 297 quilts for needy children in the NYC area. The need for these quilts is great and seems to be growing.

The ABC program will continue in September. with three new committee chairs. Jennifer Arzberger, Teddy Acosta and Georgina Lombardi will share the responsibilities.

The Veteran Quilts also did well. In June, I delivered 31 soldier quilts to the Brooklyn Veterans Hospital. Ms. Centron was delighted to receive our donation. She said that most lap-size quilts would be given to the patients receiving dialysis treatments, as the treatment room can be very cold at this time of year. The rest of the quilts would be distributed to other areas of the hospital.

From last year in September through June 2018, we donated a total of 45 Veteran quilts. I would like to make another donation in time for Veterans Day.

The ideal size for Veteran quilts is 50x60-in. or larger up to twin, any color or pattern. I always say when we give someone a quilt it's giving them a big hug but it lasts a lot longer. So keep them hugs coming. Thank you to all our members who continue to make these worthwhile programs a success.

Happy Quilting!

Sarah Vinson



A Veteran quilt made by Karen Mahoney and quilted by Joyce Austin

Guild Member Exhibits at the National Quilt Museum

ONE OF OUR GUILD MEMBERS, ALEXIS Delbridge exhibited a quilt in the National Quilt Museum in Paducah, Kentucky, in a Cherrywood Challenge exhibition July 13 – August 8. She was one of the 209 finalists, out of 450 entries, in the 2017 Van Gogh Cherrywood Challenge.

There were so many responses to the competition that Cherrywood divided the finalists into two exhibit groups. One exhibit traveled to France and the other to Holland, representing two important parts of Van Gogh's life. Alexis' exhibit is now back in the US and after closing at the National Quilt Museum on August 8, it will travel to various AQS shows around the country.

As Karla Overland, owner of Cherrywood Hand-Dyed Fabric, says, "It's a big deal," to have your quilt on display at such a prestigious Quilter's Museum. In addition, Alexis entered the 2018 Prince Challenge where she is also a finalist.

During her teaching career with the NYC Department of Education, Alexis won the National Art Teachers Fellowship

award. She traveled to Paducah in 2012, a city filled with quilters, where she used the fellowship to learn a new skill — fabric fusing — in a workshop taught by Frieda Anderson. "I think that learning the new skill was key to bringing my Van Gogh image to Paducah," she says. ♦



Alexis Delbridge's Van Gogh quilt

Pin Cushion Corner

WE ARE STARTING A new column in our newsletter this year — Pin Cushion Corner. These small items are essential for all quilters but they are often overlooked or ignored.

We would like to hear about your special pin cushions. Please send your information, along with a photo to Madi Appell, NYCFash@aol.com. Include the story of how you acquired the pin cushion.

Here are some things to think about: Do you have a favorite pin cushion? Did you make it yourself? Is it used when you travel to retreats? Was it a gift with special meaning? Was it handed down in your family through generations of quilters? Is it quirky or was it purchased on a memorable trip?

If you made your special pin cushion, please include instructions and photos, if possible.

We look forward to hearing from you and featuring your precious pin cushions in future issues of the BEE.

Madi Appell



A pineapple pin cushion made by Madi Appell

SEW SMART Tips N' Tools

Hello, and welcome back from the summer! I hope you had a productive and relaxing summer filled with sewing adventures. I know many of you went far and wide to take classes and attend retreats. I often get ideas for new tips and tools for this column on retreats.



Last week I had the pleasure of watching Micki Siegel's watercolor quilt blossom during a retreat. To make the 20 by 20 inch square for the guild's favorite

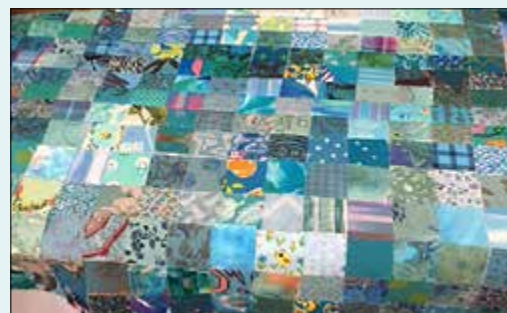


color challenge block, Micki used the nifty Quiltsmart Fusible Grid sheets. She ironed 1.5 inch squares in various shades of turquoise and blues onto the grid and then sewed first on the horizontal grid lines and then on the vertical ones.

And voila! Perfect one inch squares emerged with meticulous intersections. In addition to the accuracy, using the grid looked like a lot

of fun and a time saver. There are four 20 by 36 inch panels in each package, ranging in sizes from one inch to 2.5 inch, squares. They are about \$16 for each package on many quilting sites.

While browsing the internet, I found many other cool fusible products on Quiltsmart.com. One that caught my eye was the Lone Star Fusible Grid



interfacing which makes for perfect pointy diamonds. The interfacing for a 38 inch Lone Star is \$26.95; a bit pricey but for an imprecise quilter like me, it's the only way to make this challenging quilt. Lots of other interfacing patterns are also available.

Remember to let me know if you have discovered a tip or new tool that has impacted your quilting. Thanks.

My best,

Alice Braziller
917-557-0112
albraz@nyc.rr.com.

Koinonia Spring Retreat

BY MARY HAWLEY

AT THE END OF MAY, 21 QUILTERS traveled to the New York Catskill Mountains for a three to four day quilting retreat. During that time orphan blocks got adopted, a new quilter started her first quilt, a community-created wedding quilt was completed, and many fiber bowls were made.

Of course, there were many, many projects on which we made significant progress. For example, Ellen Piccolo, managed to spray-baste a large bed quilt and machine quilt it before she tackled her next project: an appliqued dalmation dog quilt. It was exciting to see what you can accomplish when you don't have to cook and you can quilt at all hours of the day and night.



Ellen Piccolo's appliqued Dalmation Dog quilt.
ALL PHOTOS BY MARY HAWLEY

Koinonia is a low-key facility owned by the Lutheran Church with acres of woods, a lake, cabins and campsites. We stay in the main Conference Center where each guest room opens directly to the outdoors and each bed is covered with a hand-made quilt! We set up our sewing machines in the central "great room" where we share mealtimes on the weekend with other groups and families who spend their days at different locations within Koinonia. Sharon Pratt has been organizing quilt retreats there twice a year for over 10 years.

This retreat saw the completion of a wedding quilt made for two Koinonia staff members who got married about a year ago. The quilt was started at the May 2017 retreat and finally completed at this most recent retreat. Whew! And it's DONE!

We had two first timers: Cathy Lazar and Kathleen Otto. Cathy heard about this retreat after talking to me at our "Brooklyn Quilts" Show. Kathleen grew up knowing how to sew, but not how to quilt. Donna Rae took her in hand and helped her to solve some damaged fabric issues and then taught her how to assemble a quilt top. She was thrilled with the results.

Two old friends returned; both from Virginia. Kay Francis Fry left Brooklyn about five years ago for a small town south

of Richmond, but has come back to this retreat twice a year since then. Former member Virginia Berrios who once lived on Staten Island now lives outside D.C. Virginia returned for her second retreat to hang out with her good friend Carolyn Walikas (and to create a quilt top for her...a very good friend indeed).



Kay Francis with wedding cake quilt.

The highlight of the retreat for many of us was Kirsten Fisher's Fabric Bowl Workshop. She has taught classes at City Quilter showing her techniques, so we were pretty excited when she offered to give us a workshop as part of the retreat! She starts with traditional flat quilt blocks or dramatically graphic fabric and fuses them onto heavy interfacings to transform flat shapes into three dimensional bowls. Along with her evolving technique, she has designed (and had manufactured) her own "Quilt Bowl Corner" cutting template. So we brought fabric and she brought supplies and her templates. You can see a photo of her bowls in the June issue of the Bee and samples of her work at www.kirstenfisher.net. ❖



Cathy Lazar working on her quilt design. Background: Kay Francis, Kirsten and Donna Rae

Cruising and Quilting

6

A GROUP OF BROOKLYN quilters took to the high seas in March where they had three days of classes and access to sewing rooms during the entire week. While they were cruising from Ft. Lauderdale to St. Thomas, San Juan and Labadee, Haiti, they also managed to make quite a number of quilt tops.

On the tour were Carol Lieberman, Cathy Coughlin, Madonna Connor, Kathy Clarke, Maryann McEvoy, Carol Hiler, Jean Arena and Robin Engelman. The three instructors — Terry Atkinson, Gudrun Eria and Karen Montgomery — moved from classroom to classroom on board the Royal Caribbean's Horizon of the Sea.

The quilts the group showed at the June meeting were from Gudrun's class and were made using scraps from all of the classes. Robin made two twin quilts and a baby quilt, and Maryann took home another pile of scraps from one of the other classes and made a quilt from that.

These scrap quilts will all be donated to our various charity programs. Some are being quilted now and will become comfort quilts.

"We all enjoyed the cruise and are hoping to book a Hawaii cruise in the future," says Robin Engelman. "There is also one to Canada that sails out of New Jersey every few years that we are hoping to go on." ♦



A few of the quilt tops made during the cruise.



**We carry a wide variety of
Sashiko Supplies**

- Pre-cut kits created by Susan
- Japanese & Silk Fabric
- Shweshwe fabric from South Africa
- Ribbons

www.easypiecing.com
easypiecing@gmail.com

First Quilt Memories

CAN YOU RECALL your first quilt, or the first time you saw a quilt? Did mom or grandma make a baby quilt for your birth? Or did you see your first quilt in a movie, pioneers in covered wagons, bundled in quilts at night. Perhaps you bought a bed-in-a-bag with matching linens.

My first quilt was paper. My grannies crocheted and knitted but my baby blanket was neither. Dad and gramps were carpenters and were building a house for the grands in Marcella NJ. First, they put together a "bungalow" made from three construction shacks. No heat or electricity but shelter from the weather and protection from the nighttime critters.

To brighten the space and provide insulation, nana covered the walls with covers from the Sunday newspaper magazines. Back in the early 50s the covers featured movie stars, politicians and soldiers. My built-in bunk was in the corner below Hopalong Cassidy astride his horse Champion, rearing up on hind legs.

To pass the time, I made up stories about the pictures. In the process, I observed and learned color, interesting design, corners meeting, oh, and sex education. Remember Champion? Stallion!

So, what was your first quilt memory? Send your memories to me at annamfoss@earthlink.net.

Anna Foss

IT'S TIME TO RENEW YOUR Membership

BECOMING A MEMBER OF OUR GUILD PROVIDES opportunities to meet fellow quilters, make friends, get inspired, share your work, and so much more.

MEMBER BENEFITS INCLUDE:

- Ten monthly meetings each year (September–June). Meetings feature show and tell, monthly raffle, block of the month, and vendor table. Meetings may include workshops or trunk shows.
- Twice-monthly Sunday Sewing Bees.
- Opportunity to show work at each guild meeting Show and Tell.
- Opportunity to take part in our guild-sponsored workshops, classes, bus trips, and special events.
- Opportunity to participate in Block of the Month, with detailed instructions each month, and a chance to win the month's blocks.
- Opportunity to join in our many Guild-sponsored charitable quilting projects.
- Ten issues of our monthly newsletter, *The Brooklyn Bee* (September to June) providing Guild news and Block of the Month instructions, notices of shows and exhibitions, and other articles of interest to quilters.
- Opportunity to participate in quilt retreats.
- Opportunity to show quilts in our biennial quilt show.
- Discounts at many local quilt shops.

The Guild membership fee is \$60/year.

Make checks payable to The Brooklyn Quilters Guild.

Go to our website quiltbrooklyn.org to download the membership form or you can get it at the September meeting. www.quiltbrooklyn.org.



Fall Retreat

A FALL RETREAT IS PLANNED FOR OCTOBER 26 through October 28, with an optional extra day, October 25, at the Heritage Inn in Southbury, CT. Naturally it will have a Halloween theme with a party Friday evening.

Please sign up for the retreat at the September meeting. You can also email me to register or get more information at: clieber@verizon.net

Carol Lieberman

2018

Small Quilt Challenge

This year's theme was inspired by the quote from artist Georgia O'Keeffe:

**"I found I could say things
with color and shapes that
I couldn't say any other way
—things I had no words for."**

THEME: My Favorite Color

Everyone has a favorite color—put yours into a small quilt! Express yourself with your favorite color and shape—make it traditional or contemporary, modern or abstract. Expand your creativity: try a new technique; or if you want to use your favorite block, try making it differently—make it wonky, or repeat it several times, or try a free-form version. Your favorite color should visually be the focal point of the quilt. Piece it, appliqué it, embellish it—just make it your own! We hope you will be as inspired by this quote as we were, and we look forward to seeing the wide variety of colors and shapes and designs this challenge will yield. The only limitation is that the quilt must be 20" by 20"—no larger, no smaller.

DEADLINE:
The September 2018
Guild Meeting

The Application form can be found on our website.

~Kathy O'Leary and Chris Petersen

TWISTED SQUARE

This month we'll make a charming 8½" block (8" finished) that looks complicated but is easy to make. It goes together quickly, so we encourage you to make more than one to increase your chances of winning.

BY GINNY DORRIS AND ROBYN BELLAMY

FABRICS

Two different bright

solids. Your fabrics may contain a small print, but should read as solid from a distance. Two contrasting colors works best.

Black. If you don't have black, a very dark green or blue is ok too.

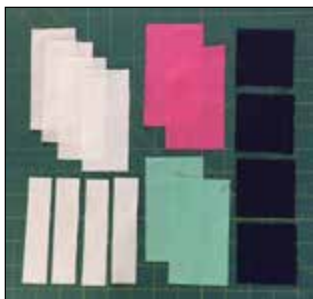
White. Plain white or white-on-white.

CUTTING

Solids: From each solid cut two (2) 4½ by 2½" rectangles. (4 total)

Black: Cut four (4) 2½" squares.

White: Cut four (4) 4½" by 1" rectangles and four (4) 4½" by 2" rectangles.

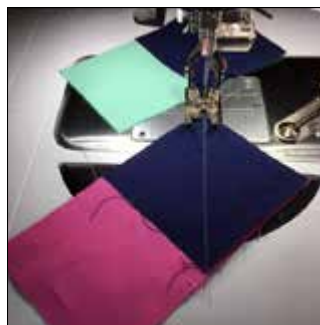


SEWING

Draw a diagonal line on the wrong side of the four black squares.



Line up a black square at the edge of each of the colored rectangles, right sides together, making sure the diagonal lines are lined up in the same direction for all four rectangles.



Sew on the line you drew, cut ¼" to the outside of that seam (away from the colored fabric), and press open.



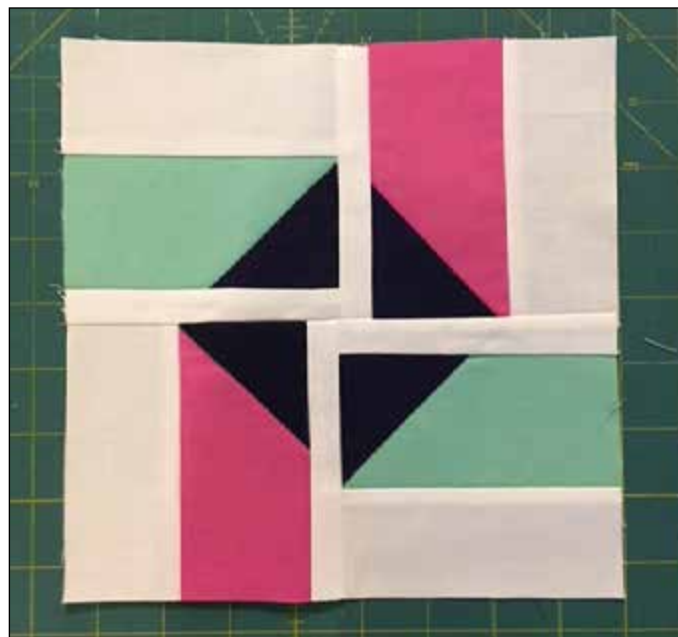
Now you need to pay attention to how you sew the white rectangles to the black-and-bright unit:

■ Sew the skinnier white rectangle (1" wide) to the side of the black-and-bright unit that contains the long side of the black triangle.

■ Sew the wider white rectangle (2") to the other side, the side that contains the black triangle's point.



Arrange the blocks as shown in the photo, with the skinnier white rectangles towards the center, and sew the block together.



Upcoming Quilt and Textile Shows

COMPILED BY MARTHA MUSGROVE

Pennsylvania National Quilt Extravaganza, Sept. 13–16, Oaks, Pa. Venue: Greater Philadelphia Expo Center. This vast four day show has lots of everything — more than 600 quilts on display, dozens of special exhibits, workshops, lectures, vendors galore. Presented by Mancuso Show Management. See the website for programs, to download a brochure, and more.
Info: www.quiltfest.com. Admission: \$15; Hours: 10–6 Thurs. – Sat., 10–4 Sunday.

Uncommon Threads, Sept. 3–Oct. 5, White Plains, NY: Westchester Community College Center for the Arts, 196 Central Ave. This is a show by Nancy Crow students, who are also BQG members. A reception with the artists will be held Sat. Sept. 29 from 12:00 to 3. The quilters are Madeleine Appell, Susan Byrnes, Joyce Crupi, Kirsten Fisher, Martha McDonald, Ellen Piccolo, Margaret Walsh and Shari Werner. Hours: Monday – Thursday 9–8pm; Friday 9:30am–4:30; Saturday 9:30am–12:30. Admission: Free. Ample free parking across from the gallery; also reachable by Metro-North Harlem Line to White Plains station.

Celebrating Black Art from the American South, through Sept. 23, The Metropolitan Museum, 1000 Fifth Ave., New York. This special exhibit includes a selection of quilts from Gee's Bend, AL. Most of the pieces are folk art by self-taught artists who use found objects. The title of the show is: **History Refused to Die: Highlights from the Souls Grown Deep Foundation Gift**. Admission: donation. **Info:** www.metmuseum.org.

Harvest of Quilts XIV, Sept. 29–30, Pine Bush, NY. The Country Quilters Guild biennial quilt show offers speakers, lectures, vendors, boutique, door prizes. Held at Town of Crawford Senior Center – across the street from Pine Bush High School — 115 State Route 302. Hours: 10–4 both days; admission: \$6.
Info: www.countryquilters.org.

Autumn Inspirations, Sept. 29–30, Schenectady, NY. A guild show by Quilters United in Learning Together, Schenectady. Vendors, boutique, raffle quilt, door prizes, demos, soldiers and kids exhibits. At Proctors GE Theatre, 432 State St. Hours: 10–5 Sat.; 10–4 Sun. Admission: \$7. **Info:** <http://quiltschenectady.org>

Quilts in the Mill, Oct. 5–7, Stockton, NJ. A biennial show by Courthouse Quilters of Hunterdon County, with more than 200 quilts, raffles, door prizes, vendors, boutique and fiber artist Joyce Hughes speaking Saturday. At the historic Prallsville Mills, 33 Risler Road/Route 29. Hours: 10–5 each day; admission: \$10.
Info: www.courthousequilters.org. Available to print from the website, a coupon for \$2 off the admission price.

Quilts in the Valley, Oct. 6–7, Stone Ridge, NY. Presented by Wiltwyck Quilt Guild, this judged show features raffle, boutique, demonstrations, vendors. At Rondout Valley Middle School, 122 Kyserike Road. Hours: 10–5 Saturday, 11–4 Sunday. Admission: \$8; children under 10 free. **Info:** www.wiltwyckquilters.org.

Harvest of Quilts, Oct. 13–14, Mineola, NY. Annual show by the Evening Star Quilters, at the Mineola Community Center, 155 Washington Ave. Hours: 10–5 Sat., 10–4 Sun. Admission info not yet posted. **Info:** www.eveningstarquilters.org.

Bits of Baltimore and Beyond, Oct. 3–28. Online. An auction: not a show, but related. Sponsored by the Baltimore Applique Society, auction proceeds will be used to preserve quilts, textiles and related documents in various museums and historical societies. For auction are little quilts — such as a single block — made by society members and based on designs in antique Baltimore Album quilts, all used by permission.
Info: www.baltimoreapplique.com.

Quilts from the Heart of Berks, Oct. 5–6, Leesport, Pa. Show presented by Berks Quilters Guild features more than 200 quilts on display, demonstrations, raffle quilt and basket raffles, vendors, silent auction and more. At Leesport Farmers Market, 312 Gernant's Church Road. Hours: 9–5 both days; admission: \$8, children under 12 free. **Info:** www.berksquiltersguild.org.

The Valley Forge Quilt Show, Oct. 19–20, King of Prussia, Pa. A guild show with more than 200 quilts on display, vendors, boutique, quilt appraisals, raffles. At Good Shepherd Lutheran Church, 132 E. Valley Forge Road. Hours: 10–7 Friday, 10–4 Saturday. Admission donation: \$7.
Info: www.ValleyForgeQuilters.org.

A Thread Runs Through It, Brandywine Valley Quilters 2018 Quilt Show, Oct. 20–21, Brookhaven, Pa. Entries accepted until Sept. 11; all are welcome to enter. Featuring quilting teacher and author Gyleen Fitzgerald for book signing and demos. At Brookhaven Municipal Bldg., 2 Cambridge Road. Admission: \$10 good for both days, under 12 free; Hours: 10–5 Sat., 10–4 Sun.
Info and directions: Brandywinevalleyquilters.org.

Lebanon Quilters Guild 12th Annual Exhibition of Quilts, Nov. 9–10, Lebanon, Pa. Demonstrations, silent auction, book sale, vendors, quilt raffle, appraisals. At Lebanon Expo Center & Fairgrounds, 80 Rocherty Road. Hours: 10–4 both days; admission \$8, 10 and under free. **Info and photos:** facebook.com/LebanonQuiltGuildShow and www.lebanonquiltersguild.com.

Fall in Love with Quilts, Nov. 17, Berwyn, Pa. Presented by The Main Line Quilters, this show and holiday boutique features show, vendors, raffles, boutique and more. (Sadly, it is the same day as our guild meeting.) At Berwyn United Methodist Church, 140 Waterloo Ave. Hours: 10–4; donation: \$5.

Info: mainlinequilters.org. Email: mainlinequilters-guild@gmail.com, or telephone Jody Beck, 602-228-1364.

Sew Know:

Let's Go Beyond the Basics, Part 1

BY MARCIE BRENNER, MCSE

10

AFTER CONCENTRATING last year's column on the basics of quilting, this year I will be focusing on more intermediate/advanced techniques. This is to introduce members who are ready to move beyond the basics and as a review of other options for our more experienced quilters. The more techniques you have, the more varied your quilts will be. As it is said, variety is the spice of life.

This month I'll be covering the partial seam, it's a fun technique that keeps the observer guessing as to where the additional pieces start and end. The block has a center shape and then the other parts are stitched to it. One of the great advantages of this method

is that the add-ons are all the same length and width for each round.

The photos show 2 different starting shapes, a square and a hexie. The square will have rectangles added, the hexie has half hexies. The construction begins with aligning the end of the add-on with the end of the starting piece, the other end will extend past the opposite end, remaining loose.

The stitching begins at the midpoint of the center shape, ending at the matched edge.

The next piece is positioned to be stitched on this joined unit and should fit perfectly. Continue adding the parts, pressing as you work.

When you have the last one on, it is time to finish stitching the partial seam. Align the loose end with the block and stitch, ensuring to match the previous sewing line.

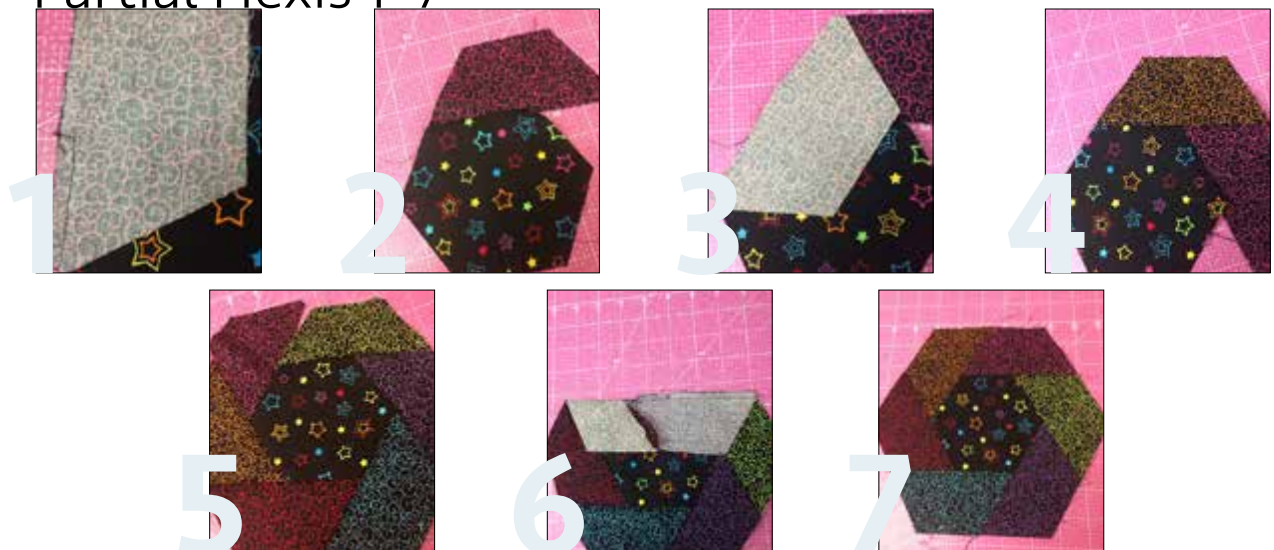
I like to assembly-line stitch these blocks starting at the partial seam, stitching in at the midpoint, and then pivoting to the $\frac{1}{4}$ " seam. I remove the extra sew-on stitches when the block is completed so that it can be pressed open.

Future columns will feature "Y" seams, curves, diamonds and more. If there is a technique that you would like to see covered just e-mail me. All ideas are welcome. ♦

Rectangles 1-5



Partial Hexis 1-7



📞 718-776-1900

💻 sewtime.com

Sewtime
SEWTIME SEWING MACHINES

**BIGGEST
SELECTION OF
MACHINES
IN THE
NYC-AREA**



**BIG
DISCOUNTS &
SAVINGS AT
SEWTIME!**

**FREE, UNLIMITED 1:1 LESSONS & PHONE HELPLINE
WITH ALL SEWTIME MACHINES!**



**NOTIONS &
ACCESSORIES**



**BOLTS & BOLTS
OF FABRIC**



**CLASSES FOR
ALL LEVELS**



**EXPERT
REPAIRS**

**TWO
CONVENIENT
LOCATIONS**

QUEENS

**78-35 SPRINGFIELD BLVD.
OAKLAND GARDENS
(BAYSIDE), NY 11364**

LONG ISLAND

**580 OLD COUNTRY RD.
WESTBURY, NY 11590
Inside of Joann's Fabrics**

**Thinking
of Trading
in Your Old
Machine?**

**Trade in your Old
Machine at Sewtime!
You won't believe
what it's worth!
Call 718-776-1900**



**ACCREDITED
BUSINESS**

brother.
at your side

PFAFF
Perfection starts here.™

Husqvarna
VIKING®

Viking
Available in
Westbury
Location



Minutes of the Executive Board Brooklyn Quilters Guild – June 16, 2018

12

Attendees

Co-Presidents Jody Leight and Sylvia Hernandez, Co-Vice Presidents Marie Towle and Linda McNeeley, Treasurer Ruth Marchese, and Secretary Trudy Reeves.

The meeting was called to order.

Treasurer's Report

Ruth distributed (1) the June 2018 financial statements, (2) the 2017/18 fiscal year income statement compared to budget, (3) the proposed 2018/19 budget, and (4) a comparison of the 2018 quilt show income and expenses with that of the 2016 show. The proposed 2018/19 budget was approved unanimously by the Board to be presented for a vote by the membership at the general meeting. The special savings account balance for future quilt shows is currently \$21,210; with a goal of reaching \$30,000 prior to the 2020 show. A mail box is not yet available at the Ninth Street Post Office and the current box has been renewed. Therefore, the Guild's address will remain the same throughout the summer.

Programming

We have not yet had a volunteer to fill the position of co-vice president left vacant by the resignation of Marie Towle. The co-vice presidents will meet this summer to set up programs for the coming year. Linda McNeeley is seeking suggestions for programs from the membership.

Quilt Show Follow-up

A meeting to discuss the show and suggestions for the future was held on June 10th. Another meeting will be held this summer, also at the Marien Heim Senior Center, on a date to be determined and announced to members.

Membership- Officers and Committee Chairs Stepping Down

The following members are stepping down:

Co-Vice President — Marie Towle
ABC Quilt Chairs — Sarah Vinson and Peg Haller
Hospitality Chair — Gladys Watson and crew
Bee Editor — Margaret Marcy Emerson

The Board extends thanks to those stepping down for their excellent service.

New Business

Jody suggested that we ask at the Marien Heim Senior Center if they would accept donations of quilts for their senior residents, since they provide us use of their dining room twice a month.

The meeting was adjourned.

Guild Income-Expense Reports by Categories 5/19/2018 — 6/15/18

Assets

CASH AND BANK ACCOUNTS	
Checking	\$4,349.11
Lenni Abel Fund	\$4,302.04
Petty Cash	\$444.95
Savings Quilt Shows	\$21,209.65
Scholarship Fund 5101	\$87.00
TOTAL ASSETS	\$30,392.75

Income

Interest on Lenni Abel and Reserve Fund	\$0.17
Donations	\$100.00
Fifty-Fifty	\$84.50
Meeting Raffle	\$159.00
Hospitality	\$57.00
Membership Dues	\$180.00
Guest Fees.	\$35.00
Show 2018: Raffle Tickets	\$250.00
TOTAL INCOME	\$865.67

Expenses

Charitable Works/PC	\$279.79
Bank Charges	\$10.00
Meeting Setup	\$40.00
Speaker	\$419.76
Printing: Bee	\$187.49
Bee: Website/Newsletter	\$614.85
Quilt Show 2018: Printing	\$595.55
Guild Telephone	\$55.64
TOTAL EXPENSES	\$2,203.08

NET INCOME **-\$1,337.41**

Show Income Total	\$29,363.13
Show Expenses Total*	\$28,103.12

NET INCOME **\$1,260.01**

**This figures does not include all the expenses such as specific expenses paid by members and donated.*

September Guest Speaker

Well-known quilter Pat Yamin, the owner of Come Quilt With Me, will give a lecture and trunk show at the September meeting. She is the author of a number of books, including *Two-Patch Scrap Quilts*, *Quilt Savvy One-Patch Scrap Quilts*, *Simple Super One-Patch Scrap Quilts* and *Back to Basics: Quilt Templates and Patterns Explained*. Pat has vended at our shows in the past, showing her range of templates as well as her iconic Brooklyn Revolver. For more information go to www.comequiltwithme.com.

Show Income/Expenses

Income	2016	2018
Admission	\$9,150.00	\$13,506.12
Ads	\$600.00	\$550.00
Booth Rental Fees	\$4,500.00	\$4,240.00
Buttons	\$74.00	
Pins		\$555.00
Member Boutique	\$1,268.00	\$1,819.00
Raffle Tickets	\$5,027.00	\$5,017.01
Silent Auction	\$1,580.00	\$1,615.00
Postcards		\$660.00
T-Shirts	\$1,906.00	
Tote Bag Raffle	\$1,255.00	\$1,401.00
TOTAL INCOME	\$25,360.00	\$29,363.13

Expenses

Event Space	\$30,199.96	\$24,997.00
Misc.(Pins)		\$746.24
Printing	\$2,152.26	\$1,770.51
Raffle Quilt	\$914.94	\$448.15
Silent Auction	\$38.25	
T-Shirts/Bags	\$1,849.25	\$141.22
Total Expenses	\$35,154.66	\$28,103.12
NET INCOME/LOSS	-\$9,794.66	\$1,260.01

Revised 6/15/18/rm



the quilt tree

10% off total purchase
with this ad

thequilttree.com	sunday	12-6
845.353.1501	monday	closed
Quilting on the Hudson	tuesday	10-6
9 South Broadway	wednesday	10-6
Nyack, New York 10960	thursday	10-6
	friday	10-6
	saturday	10-6

Authorized Bernina Dealer

13

Heard at the Retreats

"Maybe I should have measured."

"Eighty is the new 40."



Gotham Quilts
40 W 37th St
New York, NY 10018
212-220-3958
gothamquilts.com

Mon-Sat: 11am-6pm
Sun: 11am-4pm

Late night Thursdays,
open 'till 7!

New expanded hours

Starting after Labor Day **we're open 7 days a week and open until 6pm on Saturdays.**

New rewards program

We've replaced the 1-day-a-month guild discount with a **rewards program**. Come in to get your punch card to start saving today!

Fall Class Schedule

Go to **gothamquilts.com/classes** to see our full range of classes. What do you want to learn next?

**GOTHAM
QUILTS**

40 W 37th St, NYC

Come in and see our new fabric, new shipments arrive daily!



140 WEST 22ND STREET • NY NY 10011 212.206.6656

WWW.CANDYSQUILTING.COM

Check out our amazing classes in our huge classroom.
Bring in your scary projects and we will help tame the beast
in one of our lab classes

GUILD MEMBERS: GET 10% OFF YOUR PURCHASE

Bring this ad to get 15% off your purchase

(Can be used once a month)

Store hours: closed monday

Tuesday – Friday 11am – 7pm

Saturday & Sunday 11am – 5pm

Follow us on facebook and instagram @ candysquilting

 **CELEBRATING 25 YEARS**
SEW BEARY SPECIAL
718-951-3973
1025 EAST 28 STREET
BROOKLYN, NY 11210
sewbeary@aol.com
A SHOPPE FOR QUILTERS
"Where I'm always happy to show you how to do it easier, faster and more fun way."
Cotton Fabrics, Books, Rotary Tools & Templates
Digital Longarm Quilting Services
Sewing & Quilting Classes Available
Guild Discount Honored
Open by Appointment
Marcie Brenner, Owner
Master Certified Sewing Educator



**Wendy
Menard
Mathematics
Tutor**

Certified Secondary Teacher

**SAT, ACT, SHSAT prep, all levels
of middle / high school math**

wjmenard@gmail.com 917-697-2813



Crafting on
the Plaza
with M & M



Find everything you need while shopping in your pajamas!

Kaffe Fassett Collective by Free Spirit featuring Kaffe Fassett,
 Brandon Mably & Philip Jacobs • Wonderfil Specialty Threads for
 machine & hand quilting
 Quilters Dream Batting • Martelli Products • Rulers, Patterns,
 Ribbons & more

Visit our ETSY shop online
 Available to vend and teach at quilt shows and guilds

ohsewsally.com • 631-994-7361 • ohsewsally@gmail.com • sally@ohsewsally.com

Sew Right Sewing Machines

There's a reason why we're the
"best reviewed most recommended"
Sewing Machine Dealer in New York

The Best Repairs ✂ The Best Selection
The Most Knowledgeable Staff

Integrity and trust built up over the last 42 years

Unmatched Sales & Service on
Bernina... Baby Lock... Husqvarna Viking... Juki
Repairs, parts & accessories for all makes

**** Brooklyn Guild Member Savings ****
Save 10% off regular priced
Notions and Fabrics purchased over \$20
\$15 off Repair labor
on the absolute best sewing machine repairs
Over 1200 bolts of cotton fabric
quilting supplies, rulers, threads, batting & more

233-20 Union Tpke
Bayside, Queens NY 11364 718-468-5858
www.sewright.com
Tues-Fri 10-6 Sat 10-5 Closed Sundays and Mondays

BLOOM

Quilt Retreat & Fabric Store

COME AND SEW IN THE CATSKILLS



Bloom
Fabric, Art and Retreat

724 Main St.
Margaretville, NY 12455

845-586-6000



bloomquilts.store

bloom@catskill.net

Bloom: Fabric, Art, & Retreat

bloomquilts724



LOVE IS IN THE MAKING



Materials, Classes and Machines for the Inspired Maker

Store Hours : Mon – Fri 12 – 7, Sat 12 – 6, Sun 12 – 5

128 Union Street, Brooklyn, New York 11231 • www.brooklyngeneral.com



The Brooklyn Bee

**The Brooklyn
Quilters Guild**

PO Box 90790

Fort Hamilton Station

Brooklyn, NY 11209

www.quiltbrooklyn.org